



Berkeley Sedge (*Carex divulsa*)
Drought Tolerant; Average water needs
Perennial, Evergreen
Color: Green
Size: 12-18 inches tall, spread 24 inches
Full Sun to Light/ Partial/ Full Shade



Blackfoot Daisy (*Melampodium leucanthum*)
Drought Tolerant; Average water needs
Perennial
Color: Bright green with white flowers (central yellow discs)
Bloom Time: Early Spring to Late Fall
Size: 8 inches tall, spread 12 inches
Full Sun
* Not recommended for Houston



Blue Grama (*Bouteloua gracilis*)
Drought Tolerant; Low water needs
Perennial, Grass
Color: Gray-green
Size: 12-14 inches tall, spread 15-18 inches
Full Sun



Deer Grass (*Muhlenbergia rigens*)
Drought Tolerant; Low water needs
Perennial, Grass
Color: Light-green
Size: 36-48 inches tall, spread 24-36 inches
Full Sun



Dove Weed (*Croton monanthogynus*)
Drought Tolerant; Low water needs
Annual, Forb
Color: Light green with white flowers
Size: 8 inches tall, spread 12 inches
Full Sun



Four Nerve Daisy (*Hymenoxys scaposa*)

Drought Tolerant; Low water needs

Perennial

Color: Green with bright yellow flowers

Bloom Time: Early Summer to Early Fall

Size: 8-10 inches tall, spread 12 inches

Full Sun

* Not recommended for Houston



Gregg's Mist Flower (*Eupatorium greggii*)

Drought Tolerant; Average water needs

Perennial

Color: Green with purple-blue flower clusters

Bloom time: Late Spring to Early Summer

Size: 12-24 inches tall, spread 12-36 inches

Full Sun to Partial Shade

* Recommended only for Houston



Hamlin Grass (*Pennisetum alopecuroides*)

Drought Tolerant; Medium water needs

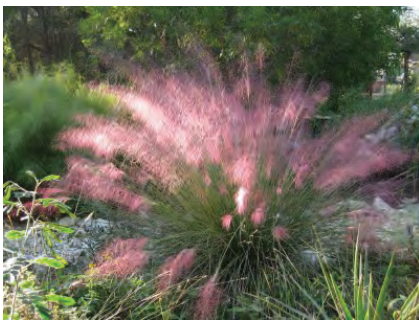
Perennial, Grass

Color: Soft green with cream panicles

Size: 24-36 inches tall, spread 24-36 inches

Full Sun

* Recommended only for Houston



Gulf Muhly (*Muhlenbergia capillaris*)

Drought Tolerant; Low water needs

Perennial, Grass

Color: Bright green with purple spikelets

Size: 18-36 inches tall, spread 15-18 inches

Full Sun



Horseherb (*Calyptocarpus vialis*)

Drought Tolerant; Low water needs

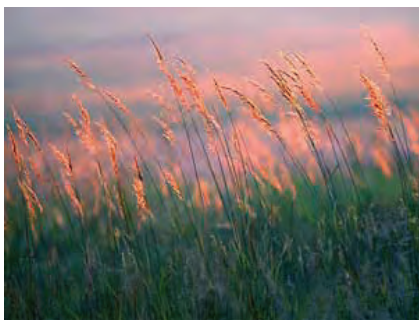
Perennial, Evergreen

Color: Bright green with yellow daisy flowers

Bloom time: Off and on all year

Size: 6-12 inches tall, spread 24-36 inches

Full Sun to Shade



Indian Grass (*Sorghastrum nutans*)

Drought Tolerant; Low water needs
Perennial, Grass
Color: Blue-green to deep orange (Fall)
Size: 36-72 inches tall, spread 18-24 inches
Full Sun to Partial Shade



Trailing Lantana Purple, New Gold, White (*Lantana montevidensis*)

Drought Tolerant; Average water needs
Perennial, Semi-Evergreen
Color: Green with several clustering flowers
Bloom time: Mid Spring to Early Summer
Size: 12-16 inches tall, spread 36-72 inches
Full Sun to Partial Shade
* Recommended only for Houston



Lindheimers Muhly (*Muhlenbergia lindheimeri*)

Drought Tolerant; Average water needs
Perennial, Grass
Color: Light gray-green to light blue-green
Size: 36-48 inches tall, spread 36-48 inches
Full Sun



Little Bluestem (*Schizachyrium scoparium*)

Drought Tolerant; Low water needs
Perennial, Grass
Color: Blue-green to mahogany-red (Fall)
Size: 24-36 inches tall, spread 24-36 inches
Full Sun to Part Shade



Mexican Petunia 'Katie's Dwarf' (*Ruellia brittoniana*)

Drought Tolerant; Average water needs
Spreading Perennial
Color: Green with purple flowers
Bloom time: Mid Spring to Early Summer
Size: 6 inches tall, spread 10 inches
Full Sun



Orange Bulbine (*Bulbine frutescens*)

Drought Tolerant; Low water needs
Perennial, Evergreen
Color: Succulent foliage with star-shaped yellow-orange flowers
Bloom time: Mid Spring to Late Fall
Size: 6-12 inches tall, spread 12-24 inches
Full Sun to Partial Shade
* Recommended only for Houston



Ornamental Peanut (*Arachis glabrata*)

Drought Tolerant; Average water needs
Spreading Perennial
Color: Green with yellow flowers
Bloom time: Off and on all year
Size: 6-12 inches tall, spread 12 inches
Full Sun
* Recommended only for Houston



Palisades Zoysia (*Zoysia japonica*)

Drought Tolerant; Low water needs
Turf Grass
Color: Bright green
Size: .5 -2.5 inches tall
Full Sun to Partial Shade



Pine Muhly (*Muhlenbergia dubia*)

Drought Tolerant; Low water needs
Perennial, Grass
Color: Bright green
Size: 24-36 inches tall, spread 48-72 inches
Full Sun
* Not recommended for Houston



Purple Heart (*Tradescantia pallida*)

Drought Tolerant; Low water needs
Perennial, Evergreen
Color: Deep purple with pale pink flowers
Bloom time: Off and on all year
Size: 12-18 inches tall, spread 9-12 inches
Full Sun to Partial Shade



Red Apple Ice Plant (*Aptenia cordifolia*)

Drought Tolerant; Low water needs
Perennial, Evergreen
Color: Bright green with red daisy flowers
Bloom time: Off and on all year
Size: 6 inches tall, spread 12-24 inches
Full Sun to Partial Shade



Red Yucca (*Hesperaloe parvifolia*)

Drought Tolerant; Low water needs
Perennial, Evergreen
Color: Green with coral colored, tubular flowers
Bloom time: Early Spring to Summer
Size: 36-48 inches tall, spread 24-36 inches
Full Sun



Rocky Point Ice Plant (*Malephora luteola*)

Drought Tolerant; Low water needs
Perennial, Evergreen
Color: Bright green with yellow daisy flowers
Bloom time: Off and on all year
Size: 6-10 inches tall, spread 24-36 inches
Full Sun



Seep Muhly (*Muhlenbergia reverchonii*)

Drought Tolerant; Medium water needs
Perennial, Grass
Color: Green to blue-green to grey-green
Size: 18-24 inches tall, spread 24-36 inches
Full Sun
* Not recommended for Houston



Sideoats Grama (*Bouteloua curtipendula*)

Drought Tolerant; Medium water needs
Perennial, Grass
Color: Blue-green, sometimes turning purple/red in fall
Size: 12-24 inches tall, spread 12-15 inches
Full Sun to Partial Shade



Society Garlic (*Tulbaghia violacea*)

Drought Tolerant; Average water needs

Perennial, Semi-Evergreen

Color: Grayish-green with violet flowers

Bloom time: Mid Spring to Early Summer

Size: 12-24 inches tall, spread 6-12 inches

Full Sun

*Recommended only for Houston



Texas Bluegrass (*Poa arachnifera*)

Drought Tolerant; Medium water needs

Perennial, Grass

Color: Blue-green (spring silvery flowers)

Size: 12-24 inches tall

Full Sun to Partial Shade



Texas Frogfruit (*Phyla nodiflora*)

Drought Tolerant; Low water needs

Perennial, Semi-Evergreen

Color: Green with white flowers

Bloom time: May to October

Size: 3-6 inches tall, spread 9-12 inches

Full Sun to Partial Shade



Texas Sedge (*Carex texensis*)

Drought Tolerant; Average water needs

Perennial, Evergreen

Color: Light green

Size: 6-12 inches tall, spread 6-9 inches

Partial to Full Shade



Woolly Stemodia (*Stemodia lanata*)

Drought Tolerant; Low water needs

Perennial, Semi-Evergreen

Color: Silver, greyish with white or purple flowers

Bloom time: April to November

Size: 4-10 inches tall, spread 24 inches

Full Sun

* Not recommended for Houston

